

ENTRUSTED



Entrusted is a
RESPONSIBILITY and
not just a word.

Consequences happen
whenever we seek to act
as an owner over what
God has entrusted us
with to steward.

TONY EVANS



ENTRUSTED





A Guide to Intentional
Church Facility Stewardship

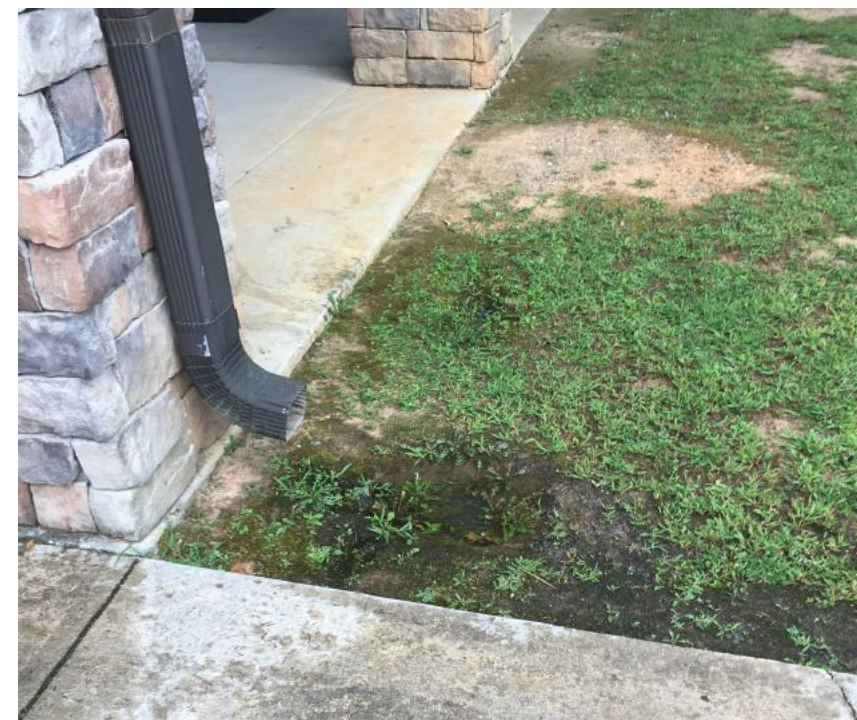
TIM COOL

Foreword by Dr. Thom Rainer

A church facility is an enormous investment. It can be worth anywhere from a quarter of a million to tens of millions of dollars. Tim brings great help in showing us the value of being good stewards of an enormous resource—our church buildings. Bricks and mortar don't make a church, but they can greatly enhance ministry. Let's all be wise in the use of that huge resource that God and our people have entrusted us with.

David Fletcher

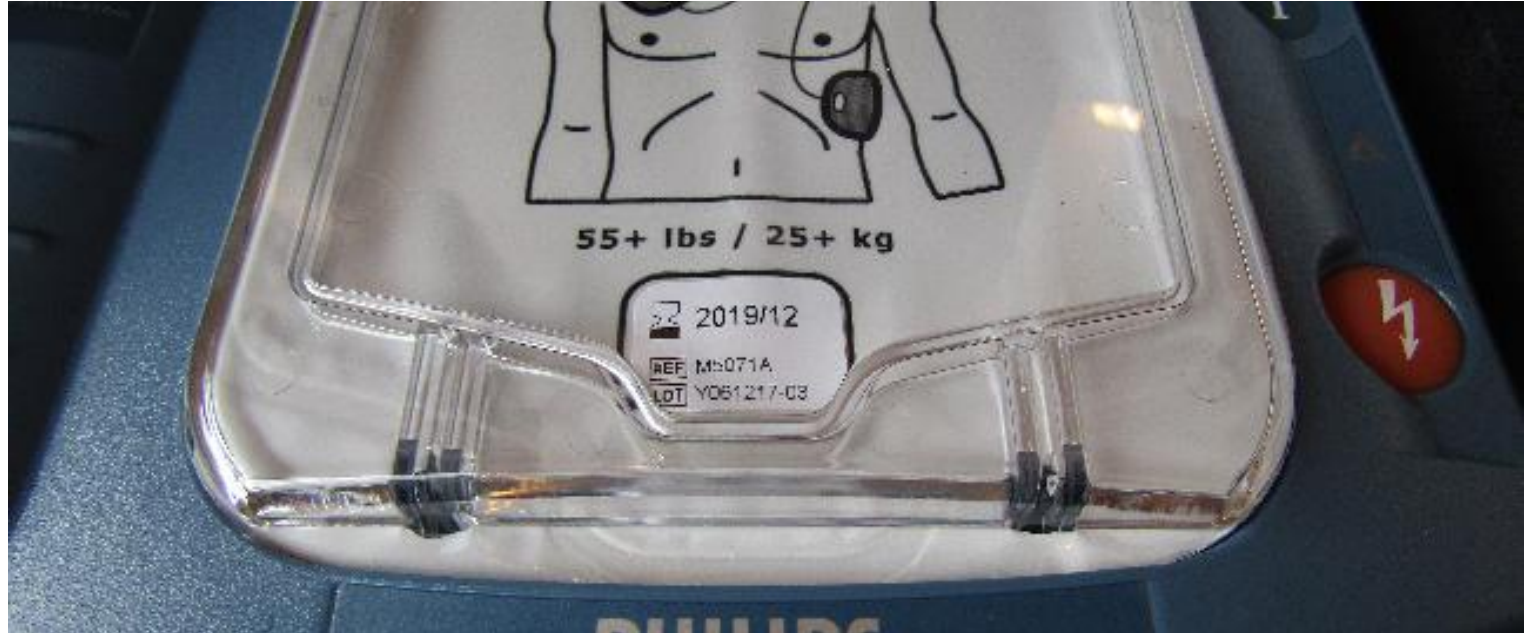
**Founder of XPastor—Expanding the Business Brain and
Pastoral Heart**







Seriously?

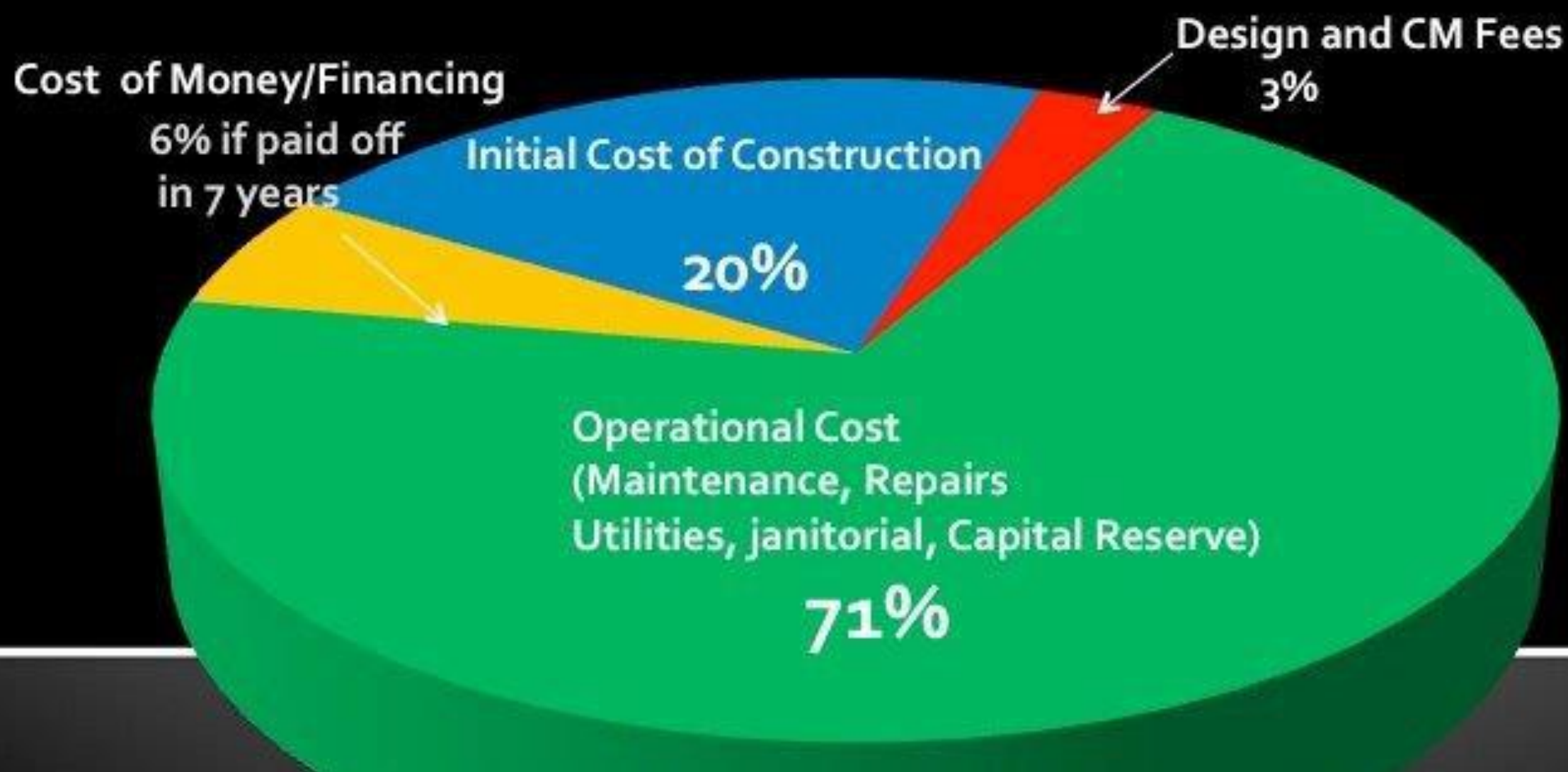


Life Safety?????



**Corrective
Maintenance
costs more
than
Preventive**

TOTAL COST OF OWNERSHIP – 40 Years



The background is a solid light pink color. It is decorated with several hand-drawn lightbulbs in various colors (orange, green, red, purple) hanging from thin lines. A large, glowing orange lightbulb is positioned below the text. In the bottom right corner, there is a drawing of a teal pencil with a sharpened lead tip.

BEST PRACTICE

OPERATIONS - \$5.25-7.50/SF*

- > Utilities - \$1.00 - \$1.50
- > General Maintenance - \$2.50 -3.50
- > Janitorial - \$1.75 - \$2.50



60% Do Not have a defensible Capital Reserve plan!!!

